

SeGMo-System

High degree of planning certainty for worldwide export



With our plug-and-play solution, you can automate every feed axis. Our UL-certified system components offer you the following advantages:

- › **SeGMo-Positioning**
Fully automatic positioning drives reduce the set-up times and costs during every format change
- › **SeGMo-Box**
Decentral control units reduce the load on your network architecture
- › **SeGMo-Connect**
Pre-assembled hybrid cables minimise the cabling effort
- › **SeGMo-Lib**
Block library for the efficient integration of components into the PLC supports your Industry 4.0 measures with active condition monitoring
- › **SeGMo-Support Tool**
Preconfigure and test the positioning system straightforwardly using the recommended software
- › **Recipe software** including support
Modernise your machines and set them up quickly without mistakes using saved formats

SeGMo-Positioning

Positioning drives for feed axes with Aluminium or stainless steel housing



Bearing concept

The torque support equalises the spindle play in the axial and radial direction

- > Captive bearing bush
- > Universal design with 2 degrees of freedom
- > High torques absorbed with low reaction forces



SeGMo-Motion

Drives for cyclic operation



SeGMo-Connect

Easy cabling

Cable outlet with M23 coupling



Cable outlet with M17 coupling



M17 connector



Cable outlet with connection terminals



Cable outlet



SeGMo-Box

Decentral control system as compact device for 5 positioning drives or modular control unit for up to 17 positioning drives



CANopen

EtherNet/IP

PROFI BUS

Sercos
the automation bus

EtherCAT

PROFI NET

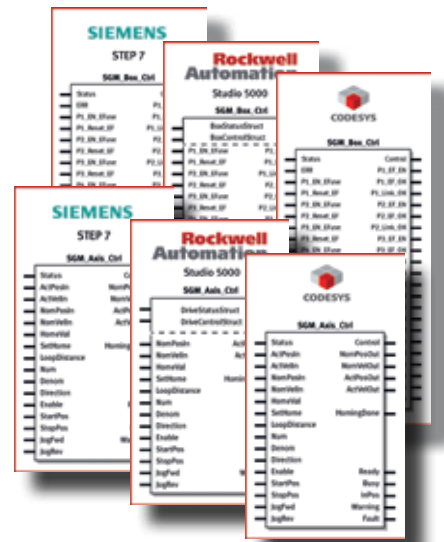
ETHERNET POWERLINK

SeGMo-Lib

Integration without programming

Comprehensive function block library for:

- › TIA-Portal / Step 7 / SCOUT
- › Studio 5000 / RSLogix
- › Automation Studio
- › TwinCAT
- › CODESYS 3.x / SoMachine V4



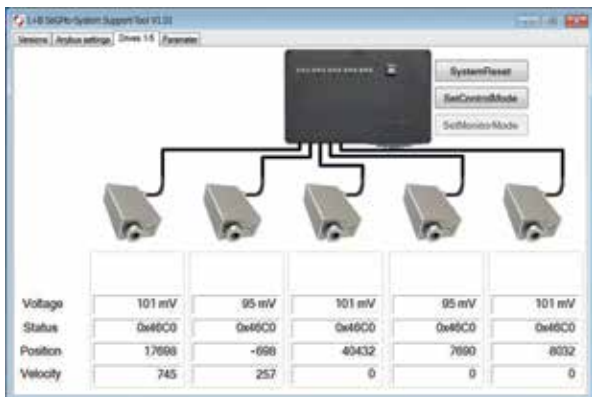
SeGMo-Support Tool

Our recommendation:

Configure and set up the complete SeGMo-System on the PC

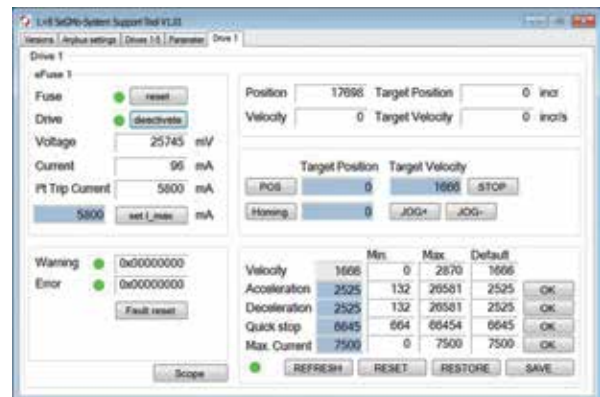
What do you need to have?

- › PC with free USB port, current version of .Net framework The application can be used without extensive installation
- › Connection to USB interface of the SeGMo-Box
- › Graphic user interface with tool tips for ease of operation



Commissioning and setting up

- › Functions of the PowerDRIVES are tested independently of the PLC connection and complex program routines
- › Manual movement of PowerDRIVES
- › Interface preparation for PLC connection (Note-ID / address of the DHCP server, etc.)



Data exchange with the PC

- › Component parameters are imported and exported independently of the interface to the PLC
- › Parameters are stored in the drives
- › Parameter sets are stored on the PC, e.g. for identical machines

In this way machines with identical operating parameters can be configured quickly and reliably.

Data exchange with the PLC

- › Parameter setting for the SeGMo-System directly in the PLC programming environment
- › Simple parameter control: motor current, speed, warnings, etc.
- › Active condition monitoring supports your Industry 4.0 activities

All steps for setting up the axis can be executed directly in your machine's PLC or conveniently on the PC.



Lenord, Bauer & Co. GmbH
 Dohlenstrasse 32, 46145 Oberhausen, Germany
 Tel. +49 (0)208 9963-0 Fax +49 (0)208 676292

info@lenord.de www.lenord.com